



Mid Atlantic Ag

Sample 598-080223-029

High Potency Hemp Super Runtz

Batch/Lot # K21_2212 LOT: RZ0223

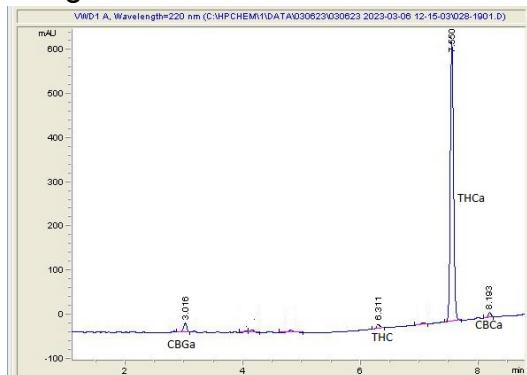
Sample Submitted: 08-01-2023; Report Date: 08-02-2023

High Potency Hemp - Super Runtz

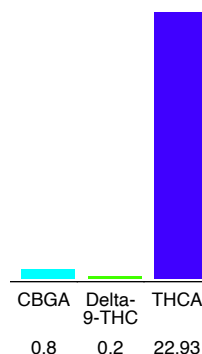
Batch/Lot # K21_2212 LOT: SR0823

Plant Material: Flower

Chromatogram



Cannabinoid Profile



Cannabinoid Profile by HPLC

0.20%
Delta-9-THC

0.00%
CBD

23.93%
Total Cannabinoids

Cannabinoid	% wt	mg/g
CBGA	0.8	8.0
Delta-9-THC	0.2	2.0
THCA	22.93	229.3
Total Cannabinoids	23.93	239.3
Calculated Delta-9-THC Yield	20.31	203.10
Calculated CBD Yield	0.00	0.00
Calculated Maximum Delta-9-THC Yield = Delta-9-THC + 0.877 * THCA		
Calculated Maximum CBD Yield = CBD + 0.877 * CBDA		

Marin Analytics, LLC
250 Bel Marin Keys Blvd, Suite D4
Novato, CA 94949
415-936-6477 / sarabiancalana1@gmail.com

Sara Biancalana
Sara Biancalana
Chief Scientist

This sample has been tested by Marin Analytics, LLC using valid testing methodologies and a quality system. Values reported relate only to the sample tested. Marin Analytics, LLC makes no claims as to the efficacy, safety or other risks associated with any detected or non-detected levels of any compounds reported herein. This Certificate shall not be reproduced except in full, without the written approval of Marin Analytics, LLC. Copyright 2022 Marin Analytics, LLC All Rights Reserved.