

Mid Atlantic Ag

Sample 598-051823-041

High Potency Hemp (THCa Dominant) - White Truffle

KY21\_2212

Batch/Lot # WT.0523

Sample Submitted: 05-18-2023; Report Date: 05-20-2023

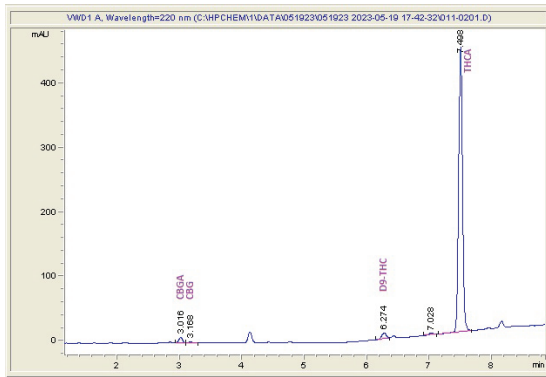
High Potency Hemp (THCa Dominant) - White Truffle

Batch/Lot # WT.0523

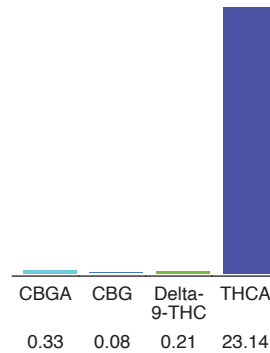
KY21\_2212

Plant Material: Flower

Chromatogram



Cannabinoid Profile



Cannabinoid Profile by HPLC

**0.21%**  
Delta-9-THC

**0.00%**  
CBD

**23.76%**  
Total Cannabinoids

Cannabinoid	% wt	mg/g
CBGA	0.33	3.3
CBG	0.08	0.8
Delta-9-THC	0.21	2.1
THCA	23.14	231.4
<b>Total Cannabinoids</b>	<b>23.76</b>	<b>237.6</b>

**Marin Analytics, LLC**

250 Bel Marin Keys Blvd, Suite D4  
Novato, CA 94949

833-321-TEST / info@marinanalytics.com

**Sara Biancalana**  
Chief Scientist

This sample has been tested by Marin Analytics, LLC using valid testing methodologies and a quality system. Values reported relate only to the sample tested. Marin Analytics, LLC makes no claims as to the efficacy, safety, or other risks associated with any detected or non-detected levels of any compounds reported herein. This Certificate shall not be reproduced except in full without the written approval of Marin Analytics, LLC. Copyright 2023 Marin Analytics, LLC All Rights Reserved.